

No 50

GRESHAM  
STREET £2



Experience the  
perfect blend  
of history and  
modernity





50 Gresham Street is an iconic corner building with a striking period style and steel-frame construction. The building's Portland stone façade is a true architectural marvel, adding an element of prestige to your business.

50 Gresham Street has been continuously updated to offer the best in terms of comfort and functionality. The building's rolling refurbishment programme ensures that our tenants are provided with modern and well maintained workspaces. The building is arranged over six floors, including a basement, ground floor and five upper levels.

Currently the first, fourth and fifth office floors are available and are 947 sq ft, 820 sq ft and 724 sq ft respectively, both have been designed to take advantage of the natural daylight, with windows on three elevations.

- Refurbished and self-contained office floors
- Fully-fitted & managed on your behalf
- Dedicated meeting rooms, break-out and kitchens
- From 100mb dedicated bandwidth with upgrade options available
- 24/7 access, facilities and IT support



Available on flexible terms from  
24 months, price on application

FLOOR	SQ FT	SQ M
First Floor	973	90.4
Second Floor	973	90.4
Third Floor	973	90.4
Fourth Floor	903	83.9
Fifth Floor	724	67.3





Our building boasts top-of-the-line finishes and features, designed to meet the demands of even the most discerning clients



DEDICATED MEETING ROOMS



FULLY-FURNISHED



PASSENGER LIFT



HIGH SPEED FIBRE IN SITU



24/7 ACCESS



LOCKERS



COOLING / HEATING

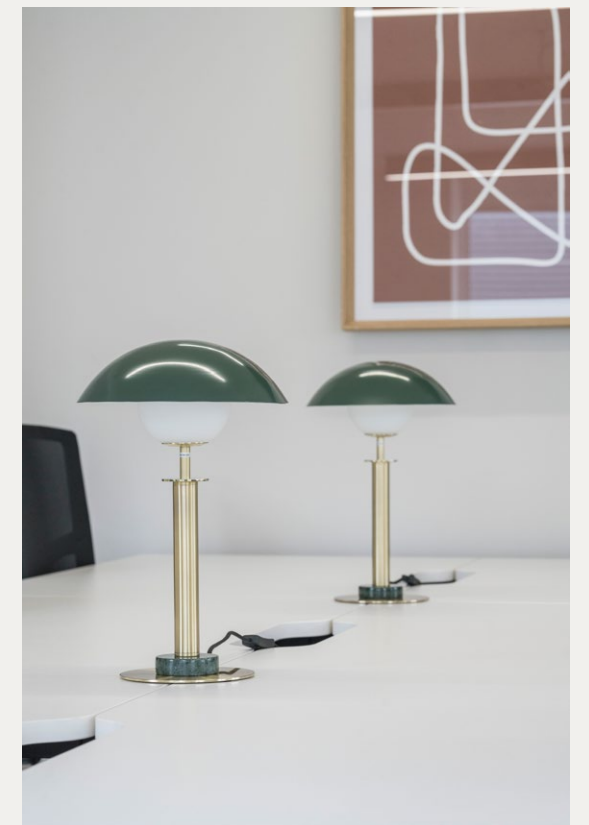


DEDICATED KITCHENS

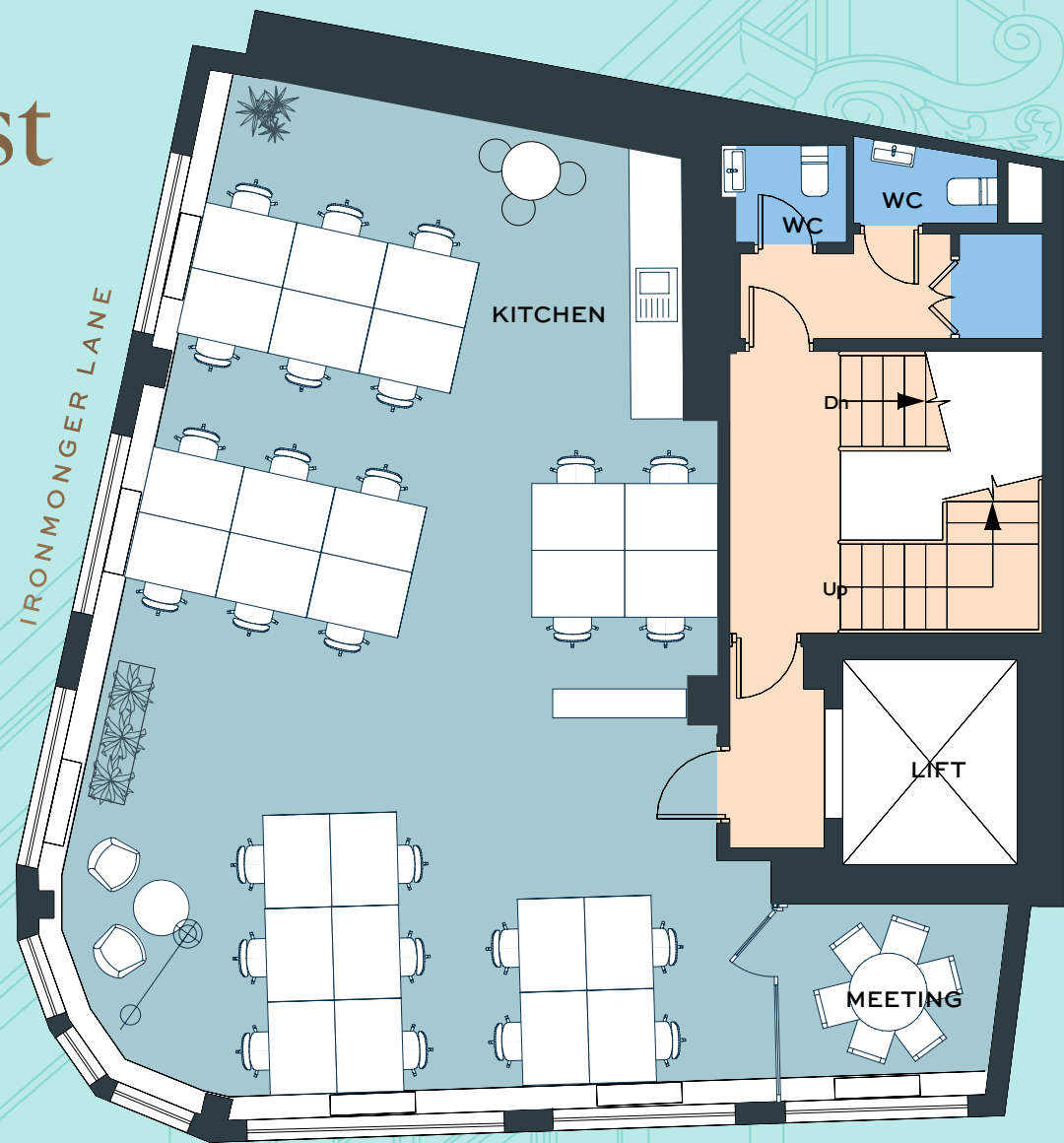


TOILET & SHOWER FACILITIES





1st



GRESHAM STREET

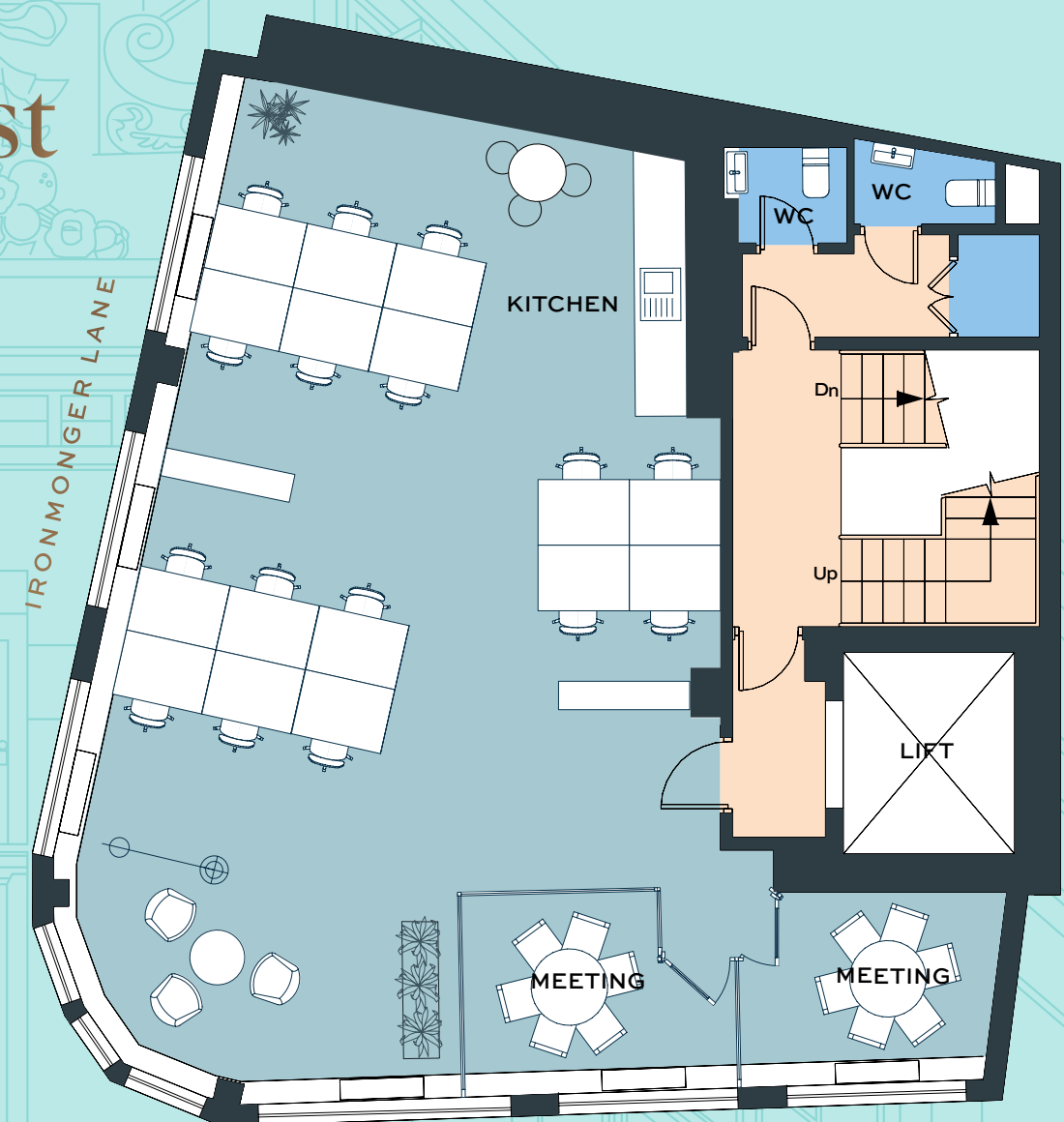
**FIRST FLOOR**

973 sq ft / 90.4 sq m

Office for up to 26 desks with dedicated meeting rooms/  
executive offices and kitchen



1st



GRESHAM STREET

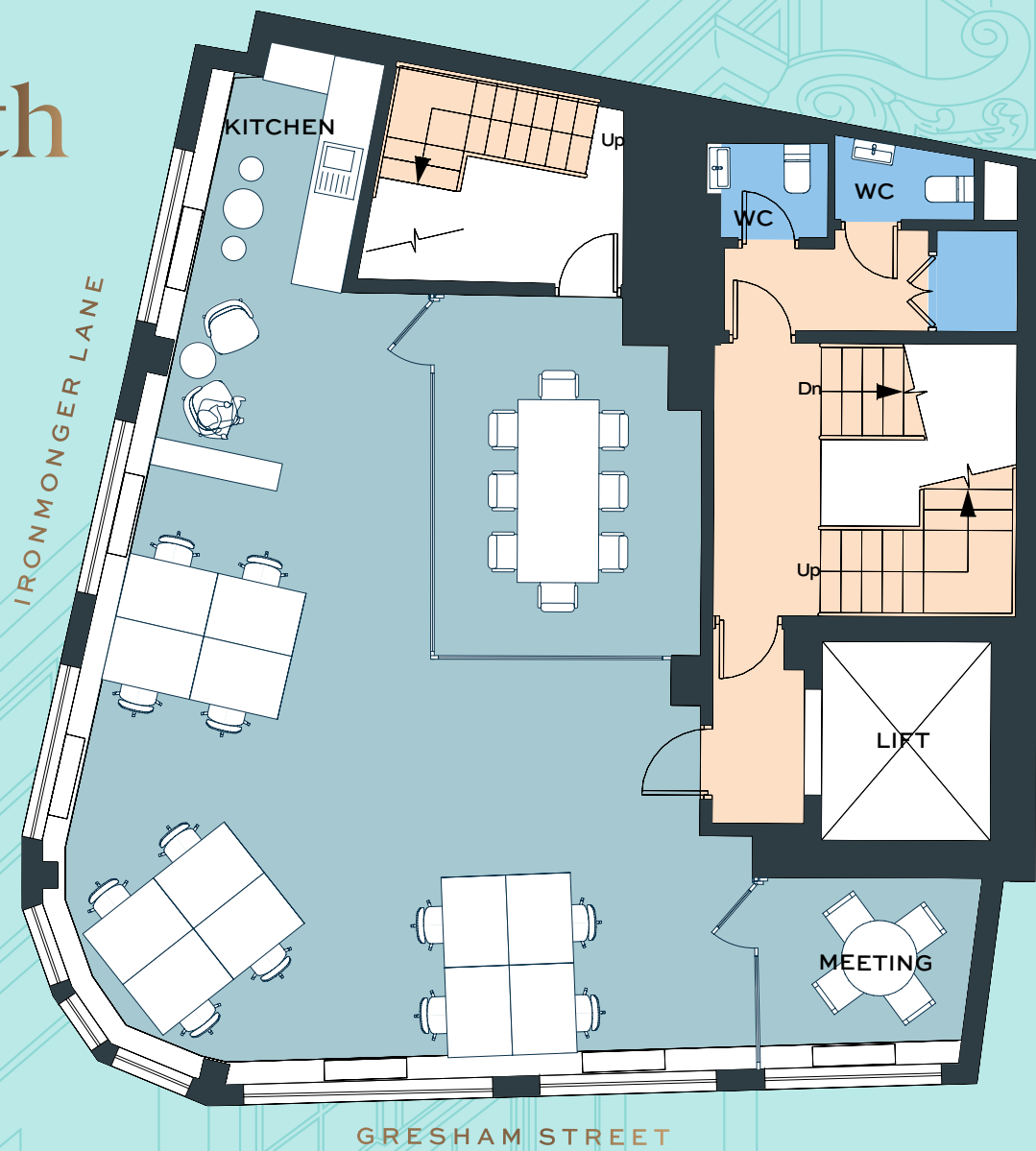
**FIRST FLOOR (ALT LAYOUT)**

973 sq ft / 90.4 sq m

16 desks with 2 dedicated meeting rooms  
and kitchen



# 4th



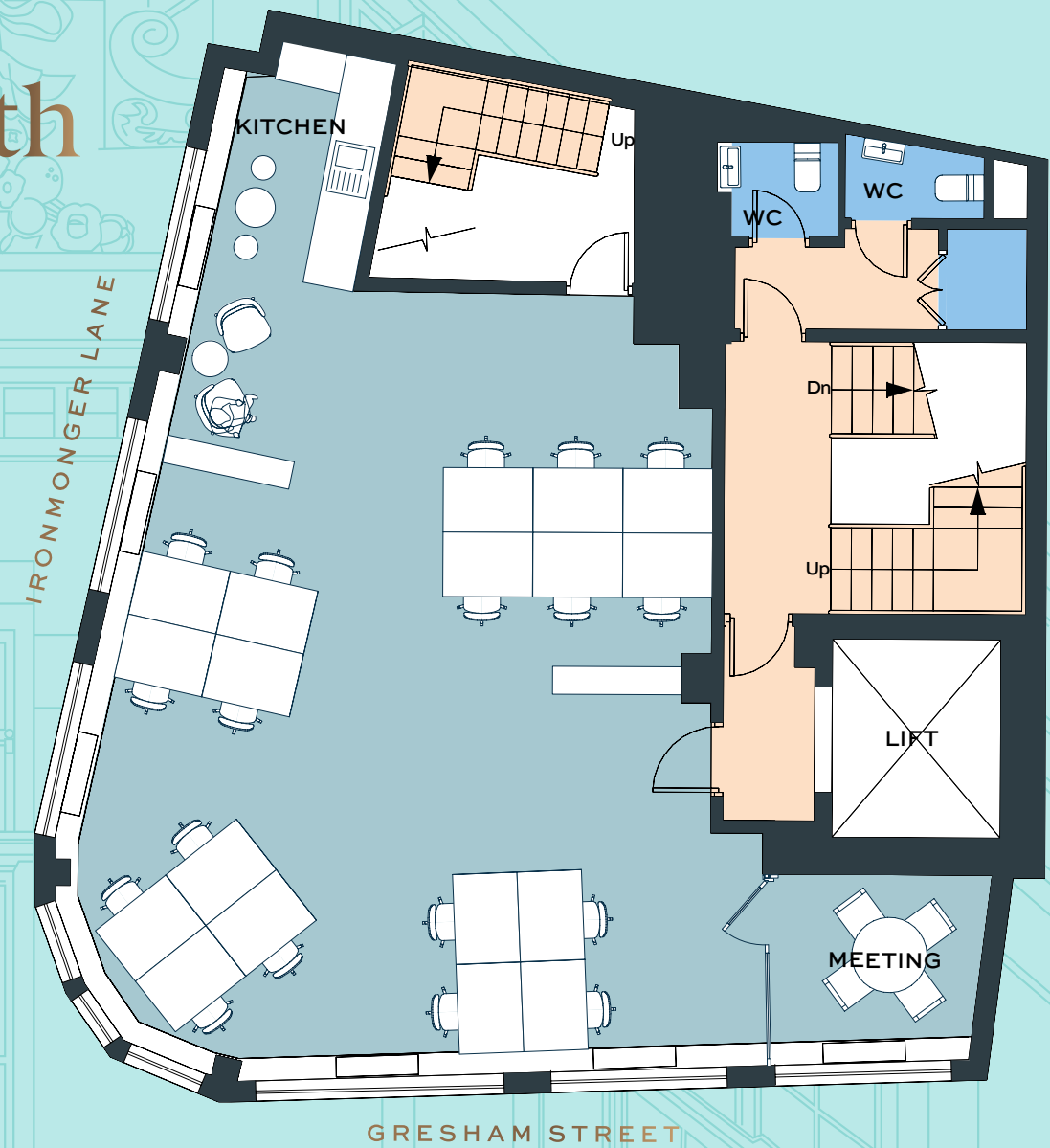
## FOURTH FLOOR

903 sq ft / 83.9 sq m

12 desks with 2 dedicated meeting rooms and kitchen



# 4th



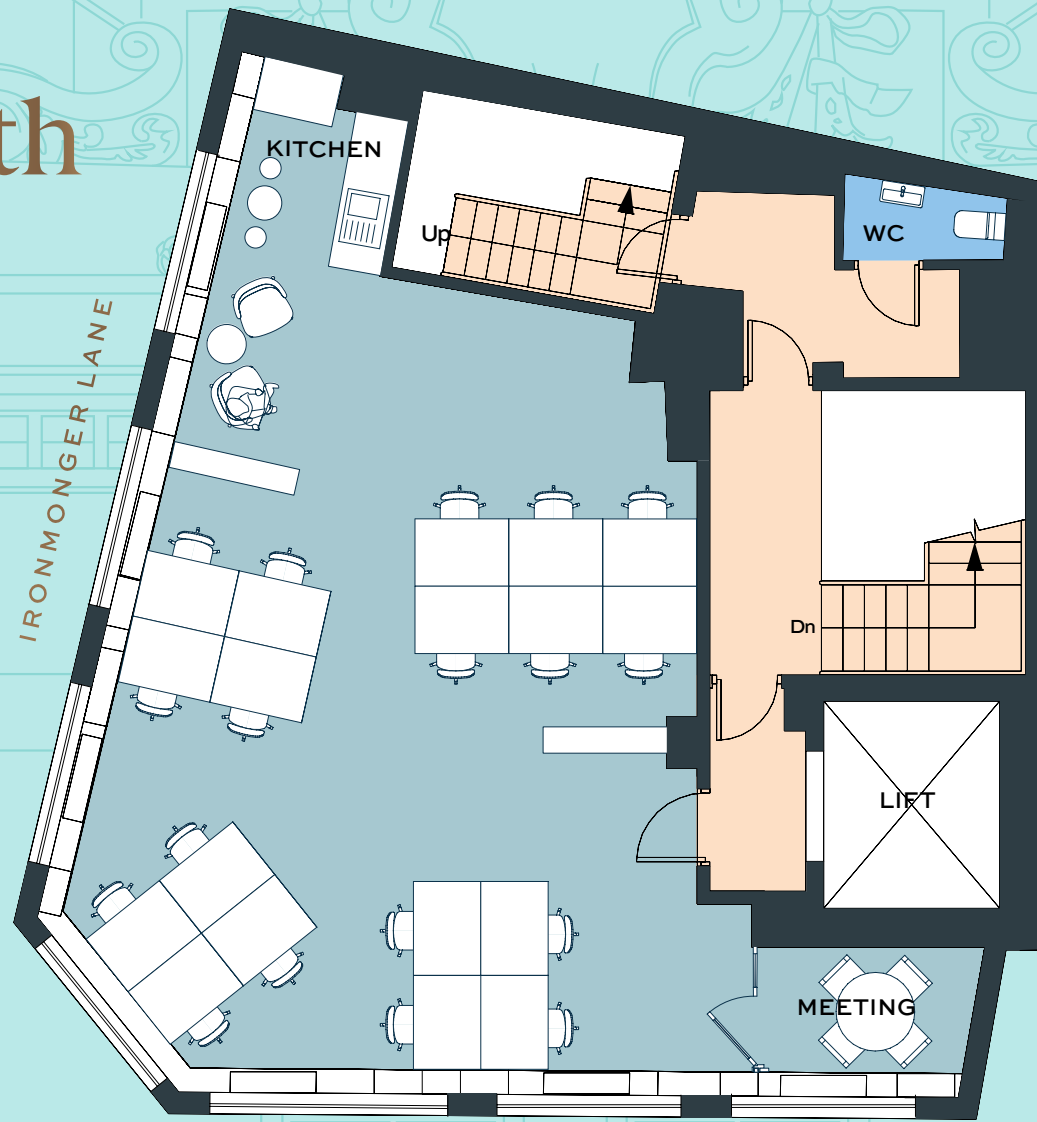
## FOURTH FLOOR (ALT LAYOUT)

903 sq ft / 83.9 sq m

18 desks with 1 dedicated meeting room and kitchen



5th



IRONMONGER LANE

GRESHAM STREET

FIFTH FLOOR

973 sq ft / 90.4 sq m

18 desks with 1 dedicated meeting room  
and kitchen



## Enhance your work-life balance with the superior amenities offered at 50 Gresham Street

Our building is strategically located to offer you easy access to the diverse range of amenities now available in the City core. The opening of the Elizabeth Line has made it easier to explore the area, and this is sure to provide even more options in the coming years.

Whether it be a quick lunchtime bite, a relaxing after-work drink, or a spot of shopping, you'll find everything you need right on your doorstep. With our building's prime location, you'll be able to take full advantage of the area's diverse offerings and make the most of your time outside of work. We believe that your office should not only be a productive space but also a place where you can enjoy your time and recharge, so we put a lot of emphasis on providing a comfortable and enjoyable working environment.

### Neighbours

BlackRock



Deutsche Bank



Schroders



ALLIANCEBERNSTEIN



salesforce

ROTHSCHILD



accenture

HOWARD KENNEDY

ING

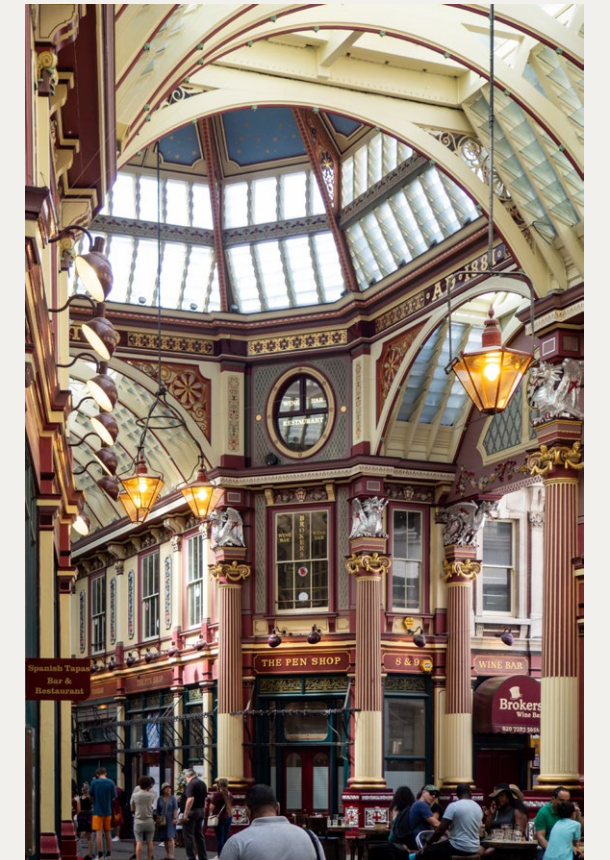
Bloomberg

worldpay

UBS

ZURICH

howden



© Mutovkin <https://creativecommons.org/licenses/by/2.0/deed.en>

## Cheapside

50 Gresham Street is located close to Cheapside, the City of London's busy street connecting the Bank of England in the east to St. Paul's Cathedral in the west. Cheapside is home to a plethora of leading retailers and is anchored by One New Change, a 300m walk from the building, which is the City of London's first purpose-built shopping center offering 220,000 sq ft of upmarket retail and restaurant space.

## Ned Hotel

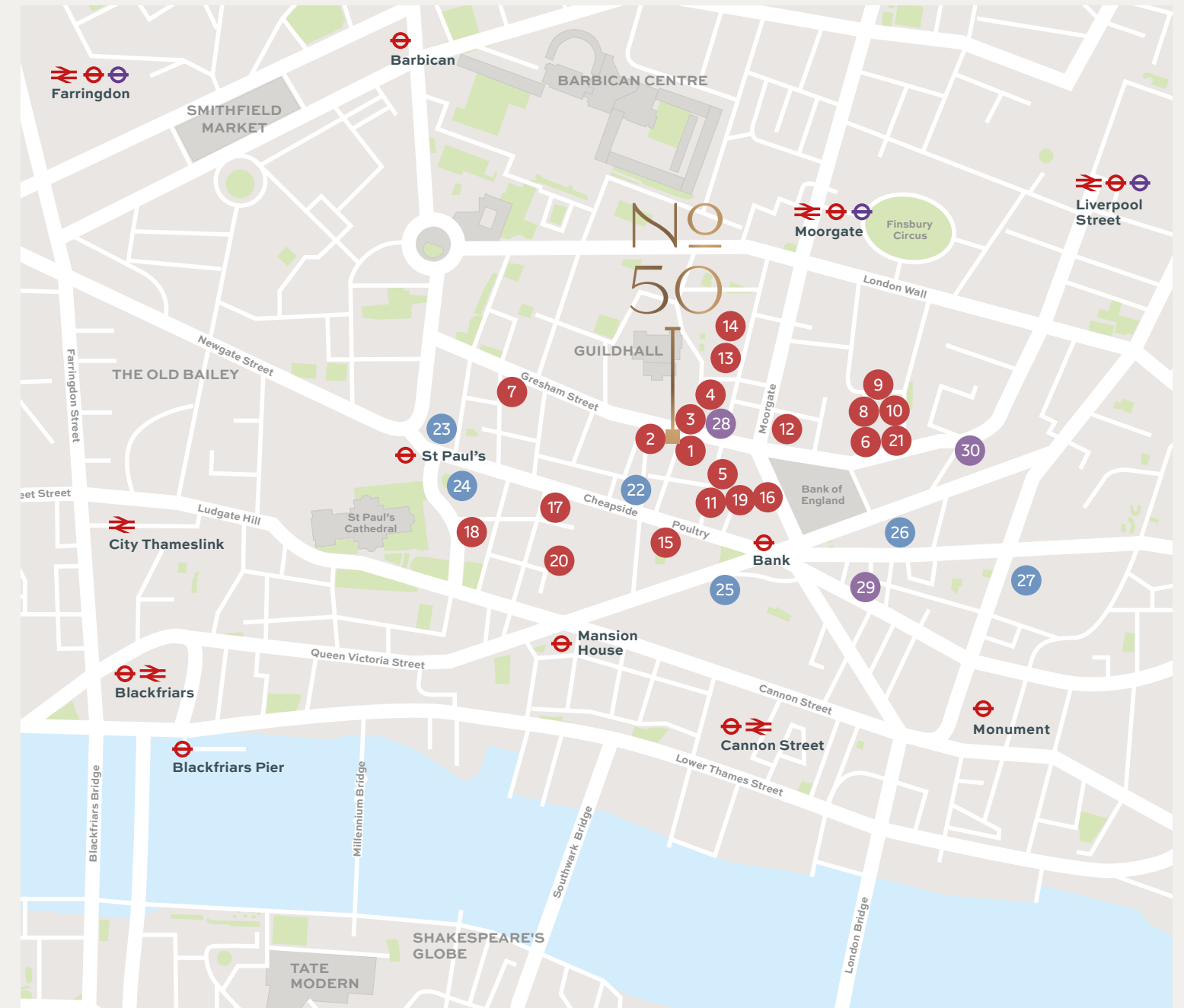
Step outside of the building, and you'll find yourself in close proximity to the city's famous landmarks and hotspots, like the Ned Hotel, located just 200m away. The 5-star hotel and members club, The Ned, has become an international attraction since its opening in the former Midland Bank HQ and boasts eight restaurants and bars.

## The Royal Exchange

A short walk away, you'll find the Royal Exchange, a popular shopping and dining destination, home to luxury brands like Fortnum & Mason, Jo Malone and Aspinall of London. The Royal Exchange is located only 300m from the building.

## Bloomberg Place

Another major attraction near our building is the Bloomberg Place, which was completed in 2018 as Bloomberg's European HQ. The building's retail arcade connects Queen Victoria Street and Cannon Street and features restaurants and bars like Brigadiers, Caravan, Lina Stores, Vinoteca, and Koya, all within just 300m of 50 Gresham Street.



### DINING

1. The Anthologist
2. Cabotte
3. The Trading House
4. Hawksmoor Guildhall
5. Goodman
6. Temper
7. Manicomio
8. Le Relais de Venise l'Entrecôte
9. Natural Kitchen
10. Notes Coffee Roasters & Bar
11. Browns Old Jewry

12. The TokenHouse
13. Old Doctor Butler's Head
14. El Vino
15. Coq D'Argent
16. The Ned
17. Burger and Lobster
18. The Ivy Asia
19. Lutyens Grill
20. Enoteca da Luca
21. Coya

### RETAIL

22. Massimo Dutti
23. Space NK Apothecary
24. One New Change
25. Bloomberg Place
26. The Royal Exchange
27. Leadenhall Market

### FITNESS

28. Digma Fitness Bank
29. Gymbox
30. Virgin Active

Efficient connectivity is vital for any business, and at No 50 Gresham Street, we understand the importance of providing you with the best transportation options.

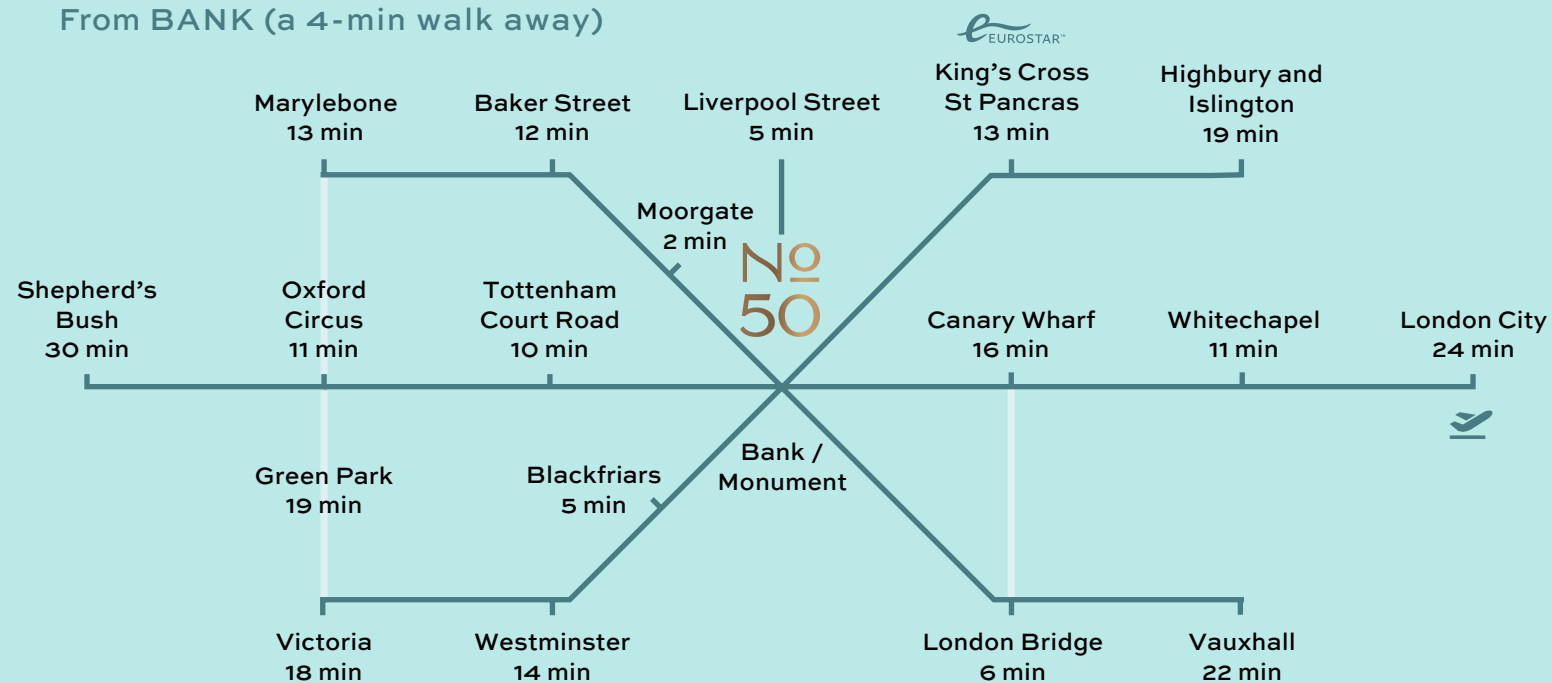
Bank and Monument Station have completed a £700m upgrade in Q1 2023, making your commute even more seamless and efficient.

The building's location offers easy access to the Moorgate Station which is just 450m to the north.

Both stations are a short connection to the Elizabeth Line. This high-speed service will greatly enhance the convenience of this micro-location, providing fast and easy transport to key areas across Central London and beyond. Commuting to Bond Street or Canary Wharf is a breeze, taking just over 10 minutes. Providing the perfect transport solution for both your employees and clients.

The building is also within close proximity to a number of London's major train stations such as Bank, St Paul's, Cannon Street, Mansion House, Monument and Liverpool Street, providing even more transportation options for your business needs.

From BANK (a 4-min walk away)



From LIVERPOOL STREET (Elizabeth Line) a 14-min walk away



# Let us be your landlord partners

## We own our buildings

- Direct contact with the building owner
- No ambiguity over responsibilities
- Efficient query resolution
- Access to quality communal amenities across the portfolio

## We manage our buildings

- We can more effectively manage your end-to-end user experience
- One point of contact for all your office needs
- We fully control connectivity of all our buildings

## We are investors in real estate across London

- We offer options to grow within your desired location or across our London portfolio
- We have a network of trusted suppliers and service providers
- All our locations offer high-quality office accommodation tailored to the location in which they sit



For more information contact:

**COPTHALL**  
**ESTATES**

**Kiri Norton-Brennan**

0203 002 2503

[enquiry@copthallestates.com](mailto:enquiry@copthallestates.com)

Disclaimer: Copthall Estates Limited on their behalf and for the Vendors or Lessors of this property, whose Agents they are, give notice that: These particulars are set out as a general outline only for guidance to intending Purchasers or Lessees, and do not constitute any part of an offer or contract. Details are given without any responsibility and any intending Purchasers, Lessees or Parties should not rely on them as statements or representations of fact, but must satisfy themselves by inspection or otherwise as to the correctness of each of them. No person in the employment of Copthall Estates Ltd has any authority to make any representation or warranty whatsoever in relation to this property. Unless otherwise stated, all prices and rents are quoted exclusive of VAT. The building statistics have been supplied by third parties and their accuracy cannot be guaranteed. Designed by CiD: [consultantsindesign.co.uk](http://consultantsindesign.co.uk)