



CHARTERHOUSE STREET  
FARRINGTON EC1





8,365 sq ft of state-of-the-art  
refurbished accommodation within  
a landmark Farringdon building,  
with two new fully-fitted floors,  
featuring glazed roof lights and  
an interconnecting slide.

 COPTHALL  
ESTATES



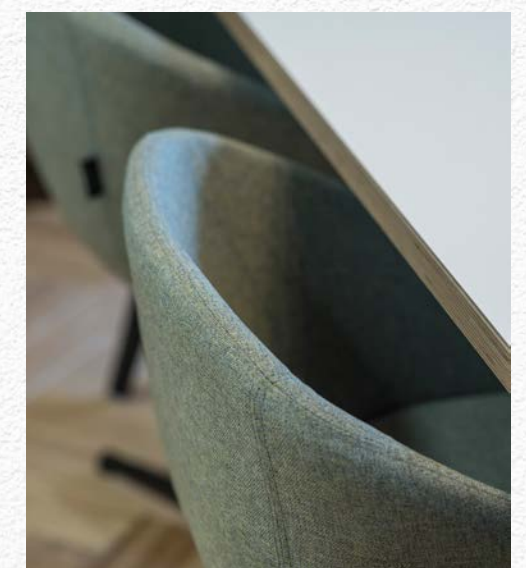




- Refurbished, self-contained, open-plan offices
- Fully-fitted & managed on your behalf
- Dedicated meeting rooms, break-out areas and kitchens
- 24/7 access, facilities and IT support
- Lift and modern stair access to all floors
- Bicycle parking, lockers & shower

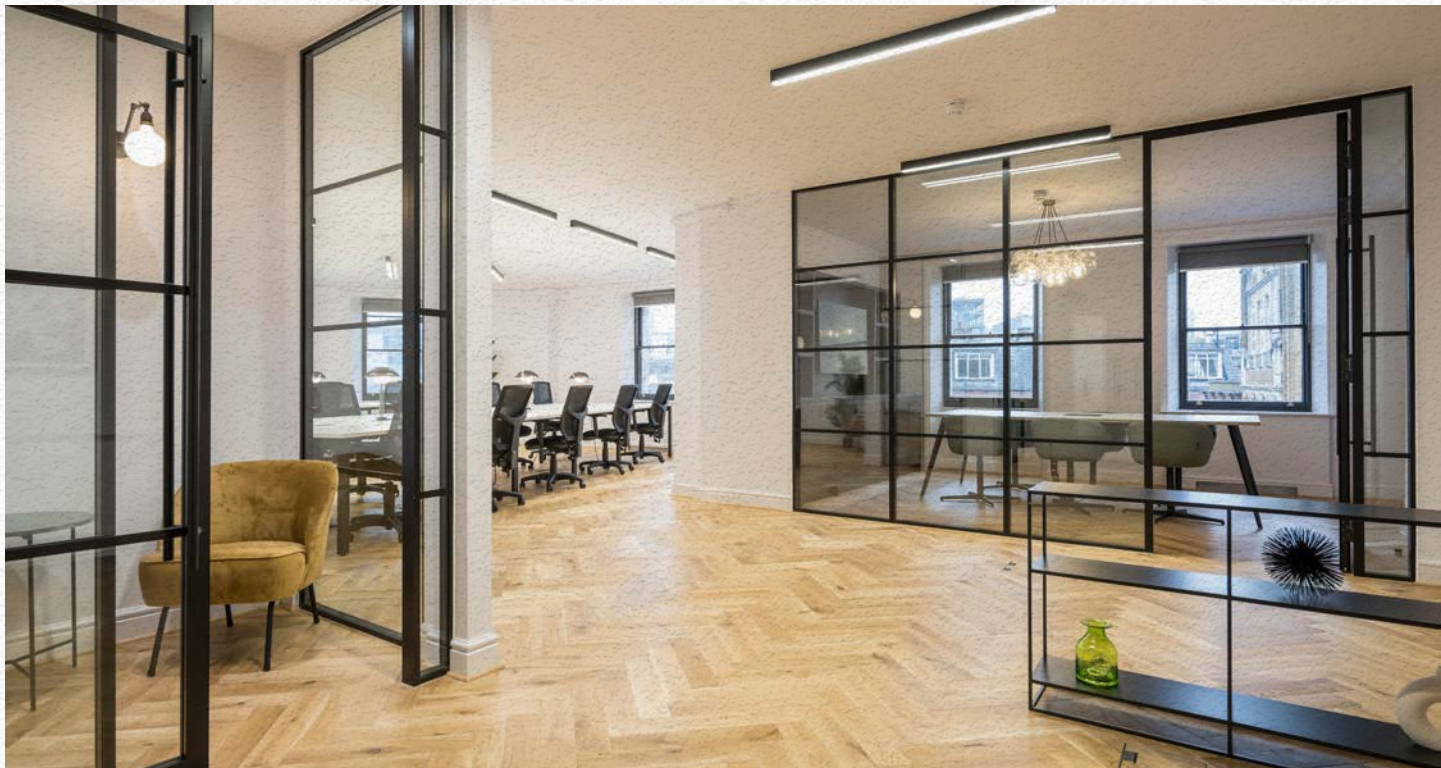


Light and spacious – with views over Smithfield Market to St Paul's Cathedral and the City, these are desirable, modern offices full of character and sophistication





Each office floor has been carefully designed to maximise the space and create the prefect work environment





Each office has an air of sophistication and is available on flexible terms from 24 months, price on application



FLOOR	SQ FT	SQ M
4th & 5th*	2,534	235.4
3rd	1,921	178.4
2nd	1,960	182.1
1st	1,950	182.1
TOTAL	8,365	777.1

\*Dual space. Floors to be let together.







The finishes and specification of the building have been substantially upgraded to meet the requirements of all types of occupiers

<p>FULLY-FURNISHED</p>	<p>DEDICATED MEETING ROOMS</p>	<p>BREAK-OUT SPACES</p>	<p>DEDICATED KITCHENS</p>
<p>AIR CONDITIONING &amp; HEATING</p>	<p>HIGH SPEED WIFI</p>	<p>PASSENGER LIFT</p>	<p>24/7 ACCESS</p>
<p>TOILET FACILITIES</p>	<p>BIKE STORAGE</p>	<p>SHOWERS</p>	<p>LOCKERS</p>

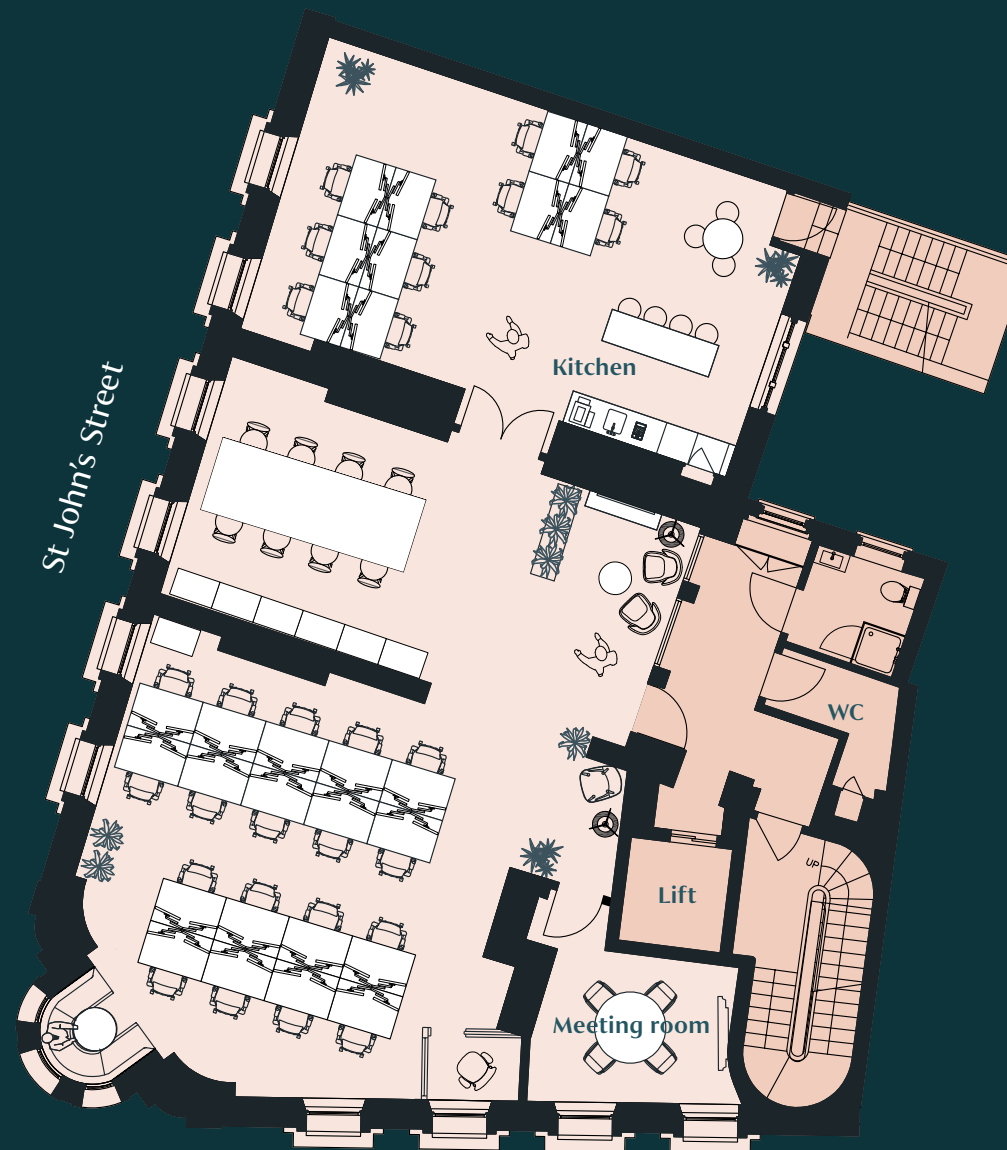




Charterhouse Street

**FLOOR 1**  
1,950 sq ft / 181.2 sq m

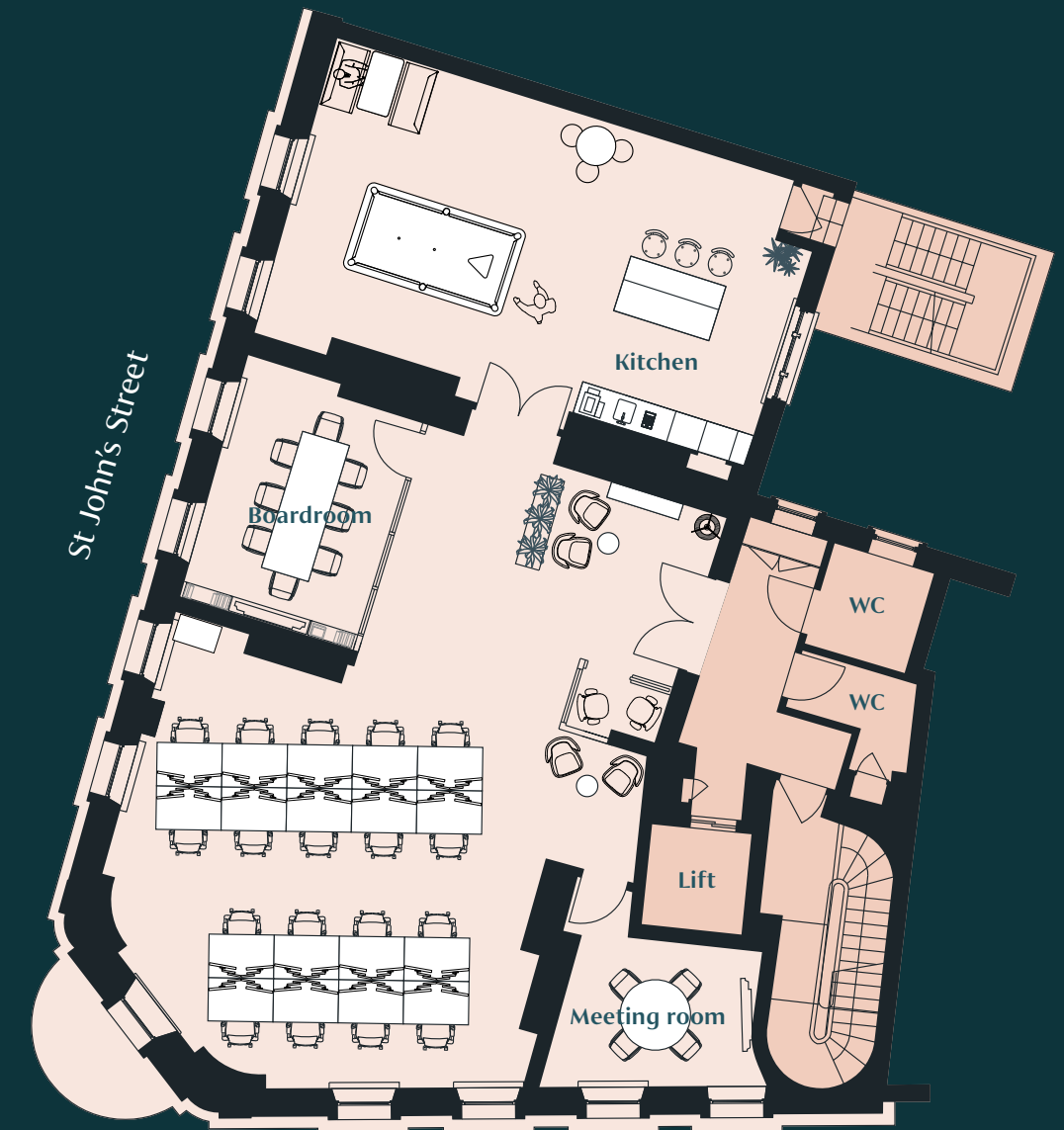
- Workstations 22
- Meeting rooms (boardroom) 1
- Meeting rooms (4-6 person) 1
- Kitchen
- Break-out spaces



Charterhouse Street

**FLOOR 2**  
1,960 sq ft / 182.1 sq m

- Workstations 28
- Meeting rooms 1
- Kitchen
- Break-out spaces



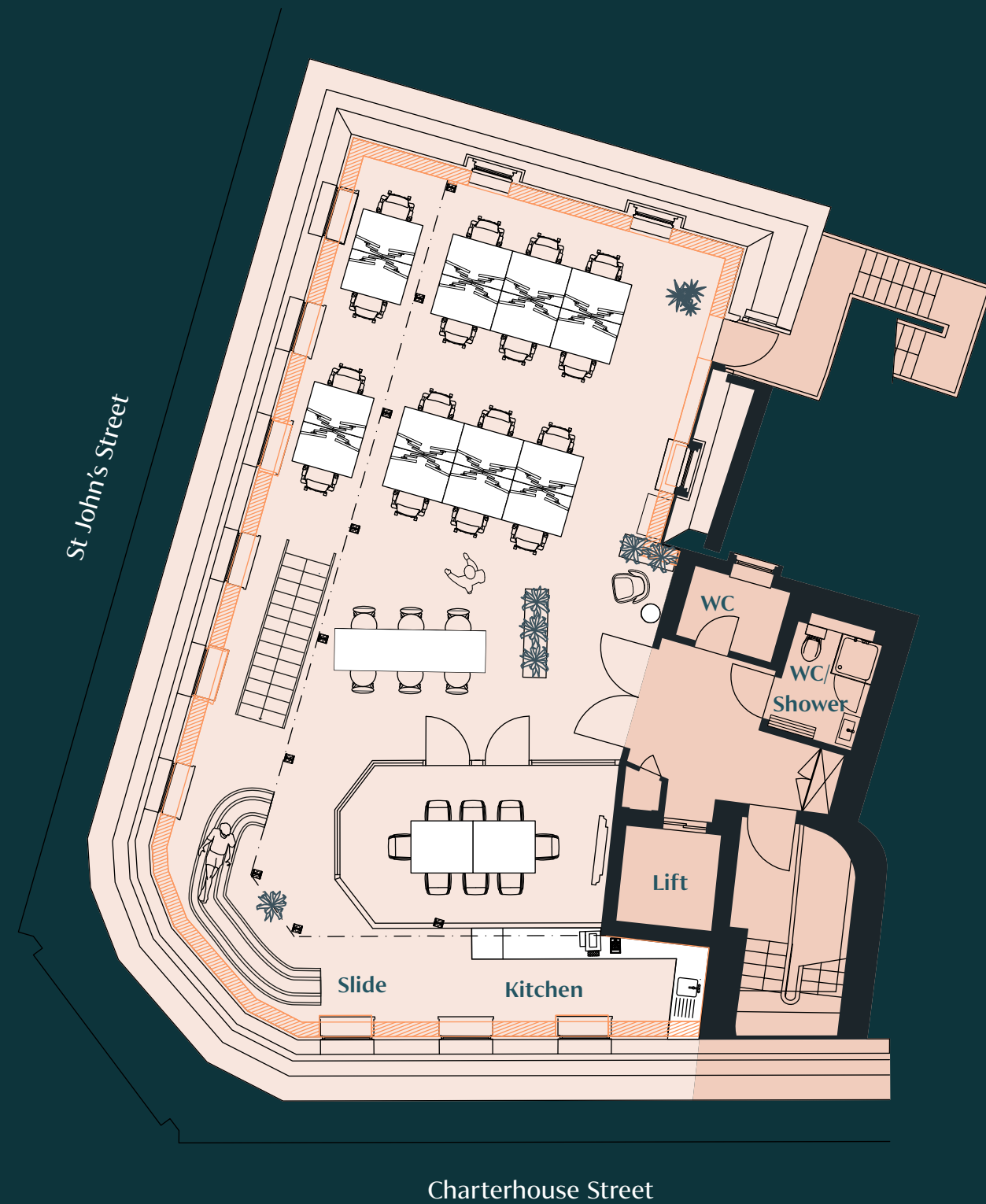
Charterhouse Street

**FLOOR 3**  
1,921 sq ft / 178.4 sq m

- Workstations 18
- Meeting rooms (boardroom) 1
- Meeting rooms (4-6 person) 1
- Kitchen
- Break-out spaces



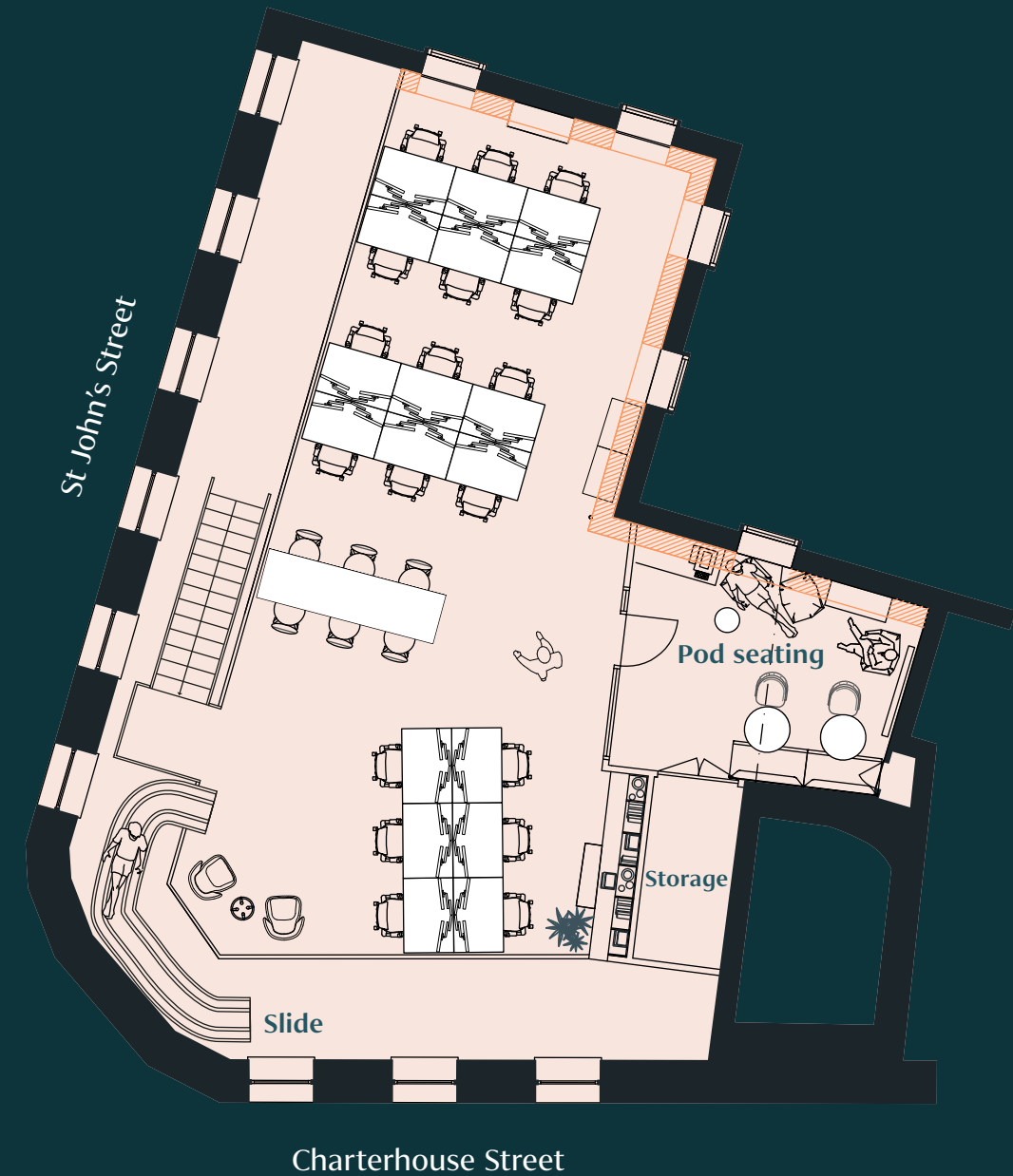




## FLOOR 4\* – Layout 1

1,534 sq ft / 142.5 sq m

- Workstations 16
- 6 person collaboration table
- Meeting rooms (boardroom) 1
- Kitchen
- Break-out space



## FLOOR 5\* – Layout 1

1,000 sq ft / 92.9 sq m

- Workstations 18
- 6 person collaboration table
- Break-out seating area



\*Dual space. Floors to be let together.

Floorplans are not to scale, are indicative only and subject to change.





## Views over Smithfield Market

Located within the Square Mile of the City of London, Smithfield Market is housed in three listed buildings and has been a livestock market for over 800 years. The offices at 89 Charterhouse have views over Smithfield Market, to the city, the Shard and St Paul's.

This is a highly desirable location in which to work with a colourful history, many local attractions, restaurants, bars and good communication links to the rest of London.









Farringdon attracts occupiers from a diverse range of business sectors – in part due to the rich amenity offering on the doorstep.



Barbican



Smithfield Market



Club Gascon



The Zetter Hotel



Coin Laundry



The Green, Clerkenwell

Located in the heart of Clerkenwell 89 Charterhouse is surrounded by a wealth of gastro pubs, restaurants, markets, clubs and shopping streets and is an exciting place to work. The Barbican Centre is also close by and is the largest performing arts centre in Europe hosting classical and contemporary music concerts, theatre performances, film screenings and art exhibitions.



Exmouth Market



Bounce



Cowcross Street



# Let us be your landlord partners

## WE OWN OUR BUILDINGS

- Direct contact with the building owner
- No ambiguity over responsibilities
- Efficient query resolution
- Access to quality communal amenities across the portfolio

## WE MANAGE OUR BUILDINGS

- We effectively manage your end-to-end user experience
- One point of contact for all your office needs
- We fully control connectivity of all our buildings

## WE ARE INVESTORS IN LONDON REAL ESTATE

- We offer options to grow within your desired location or across our London portfolio
- We have a network of trusted suppliers
- All our locations offer high-quality office accommodation tailored to the location in which they sit





89charterhouse.com

ERECTED 1871 ANNO DOM

LJS

For more information contact:

 **COPTHALL  
ESTATES**

**Kiri Norton-Brennan**  
0203 002 2503  
[enquiry@copthallestates.com](mailto:enquiry@copthallestates.com)

Disclaimer: Copthall Estates Limited on their behalf and for the Vendors or Lessors of this property, whose Agents they are, give notice that: These particulars are set out as a general outline only for guidance to intending Purchasers or Lessees, and do not constitute any part of an offer or contract. Details are given without any responsibility and any intending Purchasers, Lessees or Parties should not rely on them as statements or representations of fact, but must satisfy themselves by inspection or otherwise as to the correctness of each of them. No person in the employment of Copthall Estates Ltd has any authority to make any representation or warranty whatsoever in relation to this property. Unless otherwise stated, all prices and rents are quoted exclusive of VAT. The building statistics have been supplied by third parties and their accuracy cannot be guaranteed. Designed by CiD: [consultantsindesign.co.uk](http://consultantsindesign.co.uk)